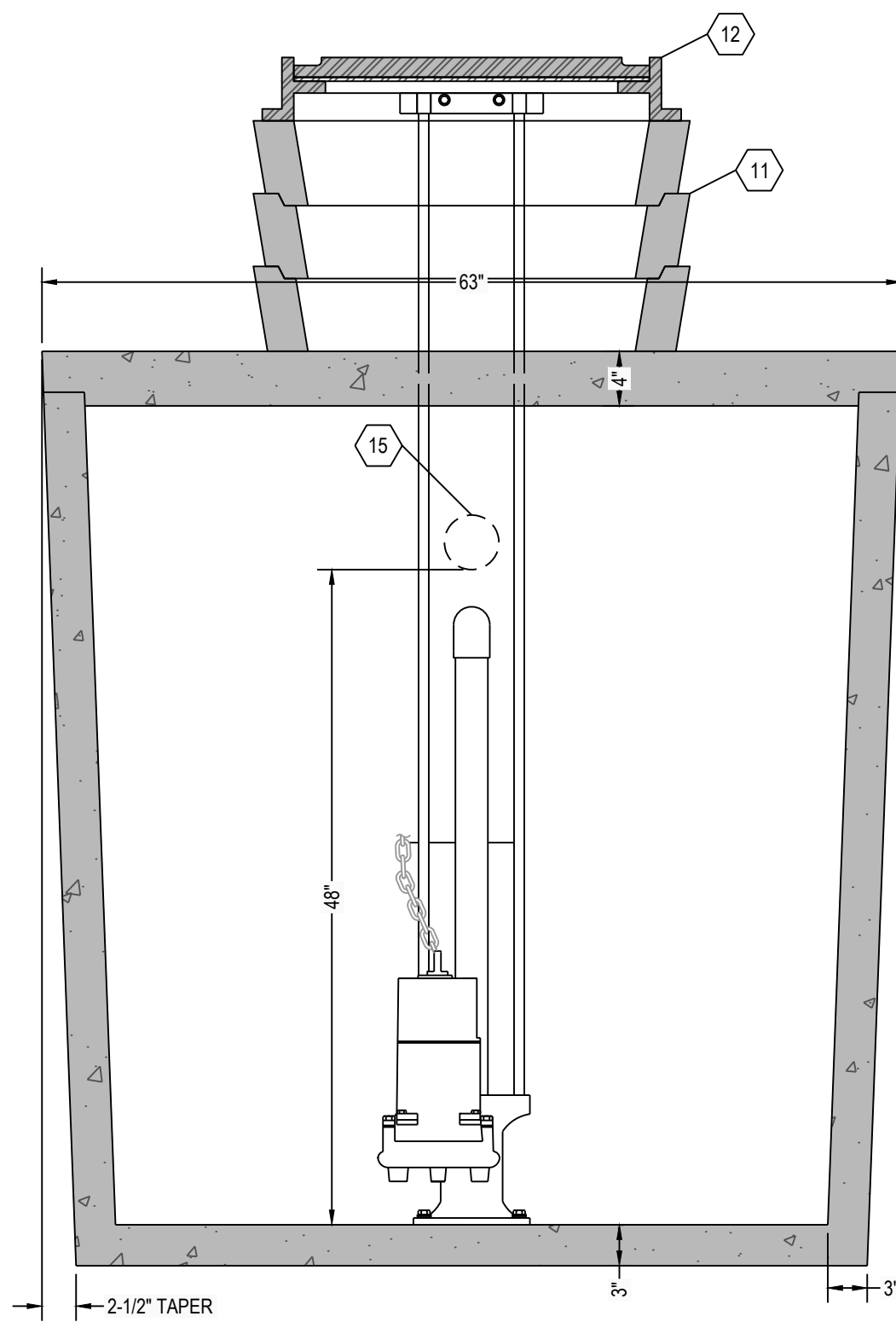
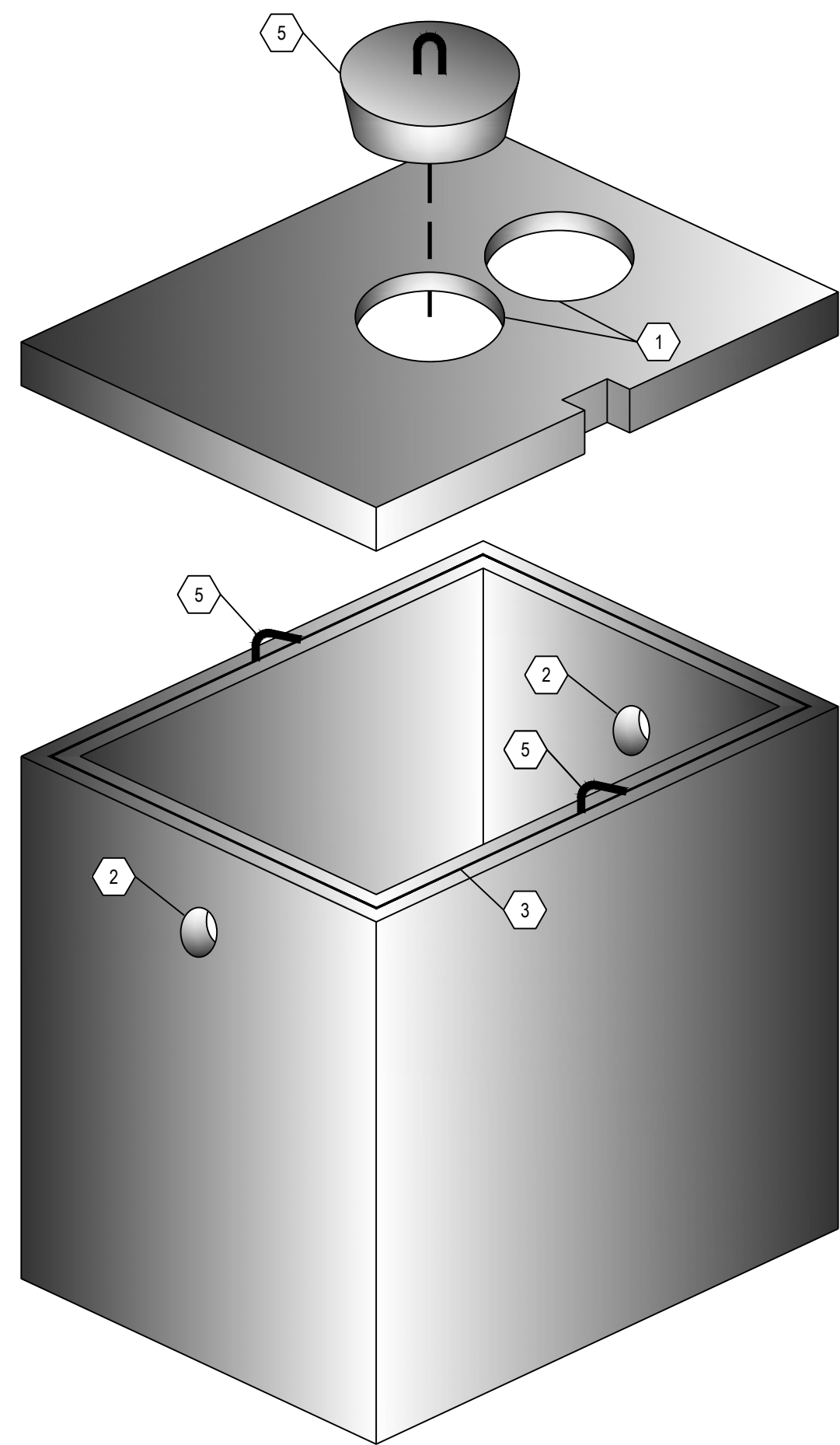


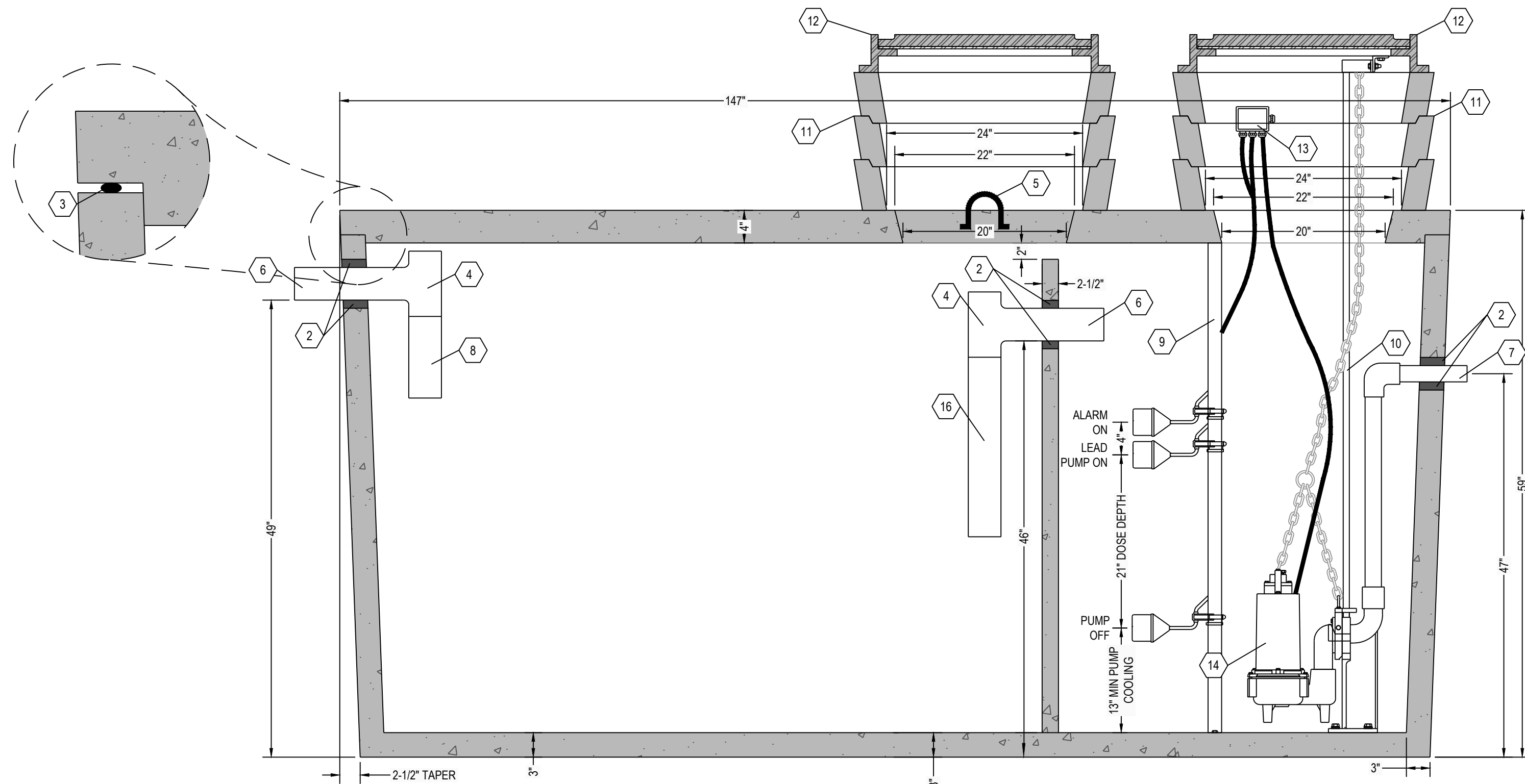
**C6 SEPTIC TANK TOP VIEW**  
1" = 1"



**C4 SEPTIC TANK SECTION VIEW**  
1" = 1"



**A6 THREE DIMENSIONAL ISOMETRIC VIEW**  
NTS



**A5 SEPTIC TANK SECTION VIEW**  
1" = 1"

**DESIGN DATA:**

1. EARTH COVER = 3 FEET MAX.
2. ALLOWABLE WHEEL LOAD = 2500 LB MAX.
3. CONCRETE MINIMUM COMPRESSIVE STRENGTH = 5,090 PSI @ 28 DAYS
4. LIFTING HOOKS ARE 1/2" DIAMETER, ASTM A36 COLD ROLLED STEEL.
5. SEPTIC TANK LID IS REINFORCED WITH 6 X 6 W8.0 X W8.0 WELDED WIRE FABRIC.
6. SEPTIC TANK BOTTOM AND SIDES ARE REINFORCED WITH 6 X 6 W10.0 X W10.0 WELDED WIRE FABRIC.
7. ALL CONCRETE SURFACES ABOVE THE LIQUID LEVEL ARE COATED WITH AIRLESS ASPHALT.

**CASTING WEIGHTS**

WEIGHT OF LID: 2,725.0 LBS  
WEIGHT OF TANK: 7,744.5 LBS  
TOTAL CASTING WEIGHT: 10,469.5 LBS

**SEPTIC COMPARTMENT CAPACITY:**  
LIQUID STORAGE = 972 GALLONS  
19.4 GALLONS PER INCH

**DOSING COMPARTMENT CAPACITY:**

LIQUID STORAGE = 528 GALLONS  
10.6 GALLONS PER INCH  
MAXIMUM DOSE = XXX GALLONS (XX")  
PUMP COOLING = 138 GALLONS (13")  
UNUSED (ALARM) = 42 GALLONS (4")  
TOTAL = XXX GALLONS (XX")

**NOTES:**

1. SET PUMP ON FLOAT SWITCH ELEVATION ACCORDING TO ELEVATION TABLE (BELOW); WHICH YIELDS THE REQUIRED DOSE VOLUME OF XXX GALLONS.
2. CONTRACTOR SHALL INSTALL CONTROL PANEL ACCORDING TO PUMP MANUFACTURER'S RECOMMENDATION.
3. COORDINATE POWER & ALARM SERVICE PRIOR TO CONSTRUCTION ACTIVITIES
4. ONLY NON-CORROSIVE MATERIALS SHALL BE UTILIZED WITHIN THE DOSING TANK AND FOR THE RISER AND LID (NO GALVANIZED, PAINTED, OR EXPOSED STEEL)
5. AUDIO VISUAL ALARM CIRCUIT MUST LOCK ON WITH ANY PUMP FAILURE WITH MANUAL RESET.
6. THE INLET PORTS THROUGH THE INTERIOR WALL SHALL BE PROVIDED WITH A SANITARY TEE AND TS-4PRO RUBBER GASKET SEAL BY TUF-TITE. THE SANITARY TEE SHALL BE LOCATED OUTSIDE THE PUMP VAULT (IN THE SEPTIC COMPARTMENT). A 12" LONG DOWNWARD EXTENSION SHALL BE PROVIDED AT THE SANITARY TEE. AN UPWARD EXTENSION SHALL BE PROVIDED AT THE SANITARY TEE SUCH THAT THE TOP OF EXTENSION EXTENDS BEYOND THE ALARM ELEVATION.

DOSING CHAMBER ELEVATIONS	
DESCRIPTION	ELEVATION (FEET)
BOTTOM OF CHAMBER	0.00
PUMP OFF	1.08
PUMP ON	2.83
ALARM	3.17
LAG PUMP ON	N/A

**NOTE:**

1. 24" DIAMETER POLY RISERS OR CUSTOM RECTANGULAR RISERS WITH ALUMINUM HATCHES ARE AVAILABLE AS SUBSTITUTES TO POLY RISER AS SHOWN HEREON.
3. HIGH PRESSURE CLOSED END BOOT SEALS ARE AVAILABLE AS SUBSTITUTES TO RUBBER GASKET TYPE SEALS AS SHOWN HEREON.

**KEYNOTE INDEX**

1	20" DIAMETER MANHOLE OPENING
2	RUBBER BOOT BY PRESS-SEAL OR POLYLOK
3	MASTIC ROPE
4	SANITARY TEE AT INLET
5	1/2" DIAMETER LIFTING HOOKS
6	4" DIAMETER INLET (6" AVAILABLE UPON REQUEST)
7	1" DIAMETER OUTLET
8	12" EXTENSION AT INLET
9	FLOAT POLE ASSEMBLY WITH STAINLESS STEEL HARDWARE
10	RAIL SYSTEM WITH STAINLESS STEEL RAILS & HARDWARE
11	CONCRETE GRADE RING (AS NECESSARY)
12	CAST FRAME & COVER (NOT INCLUDED)
13	WATERTIGHT ELECTRICAL JUNCTION BOX
14	DOSING PUMP
15	ONE (1) 4" DIAMETER PORT THROUGH INTERIOR WALL - SEE NOTE 6
16	24" EXTENSION OR EFFLUENT FILTER

# RENSSELAER SEPTIC TANKS

1211 NORTH WESTON STREET  
P.O. BOX 70  
RENSSELAER, INDIANA 47978  
phone: (219) 866-5063  
(800) 240-5123  
fax: (219) 866-3894

PROJECT NAME  
CLIENT NAME  
ADDRESS

PROJECT NO: ---  
FR1500 GAL-DUAL-NT-SIMPLEX-2-2021.DWG  
DRAWN BY: ASJM  
CHECKED BY: PEW  
TITLE:  
**MANUFACTURER'S  
DETAIL DRAWING**  
1500 GALLON (2) COMPARTMENT  
SIMPLEX DOSING  
NO TRAFFIC

**R-000**

\* ALL RENSSELAER SEPTIC TANKS ARE MONOLITHICALLY POURED \*